

ALTERATIONS:

- Iss. Date. Name. Alteration
- 1 09/03/2017 AS INITIAL ISSUE
- 2 05/09/2017 JW NOTE ADDED; KIT TO INCLUDE C15 THROTTLE CABLE
- 3 11/09/2018 AM COMPONENTS SWAPPED SIDE TO GIVE CLEARANCE FOR THREADED BAR AGAINST LEVER IN ASSEMBLY.
- 4 21/05/2019 AS 2X M5X25SS AND 2X M5WSS ADDED. STANDARD BOLTS DONT HAVE ENOUGH ENGAGEMENT
- 5 22/09/2021 JW UPDATED BOM TO CORRECT NUMBER OF M6LZ'S, REF NCR897

Internal

Notes:
All dimensions in MMS
UNCONTROLLED COPY

Part No: CLS3Version: 5

Description: HERITAGE SINGLE LINKAGE

File: Y:\ACCESSORIES\Linkage\

Project: LINKAGE - D318

Frame: 1 of 1

Tolerances: +/-0.1 unless stated

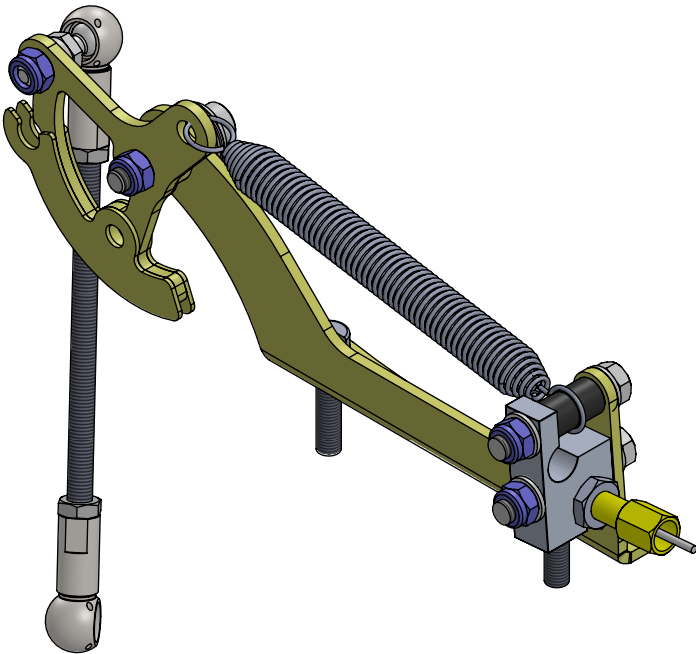
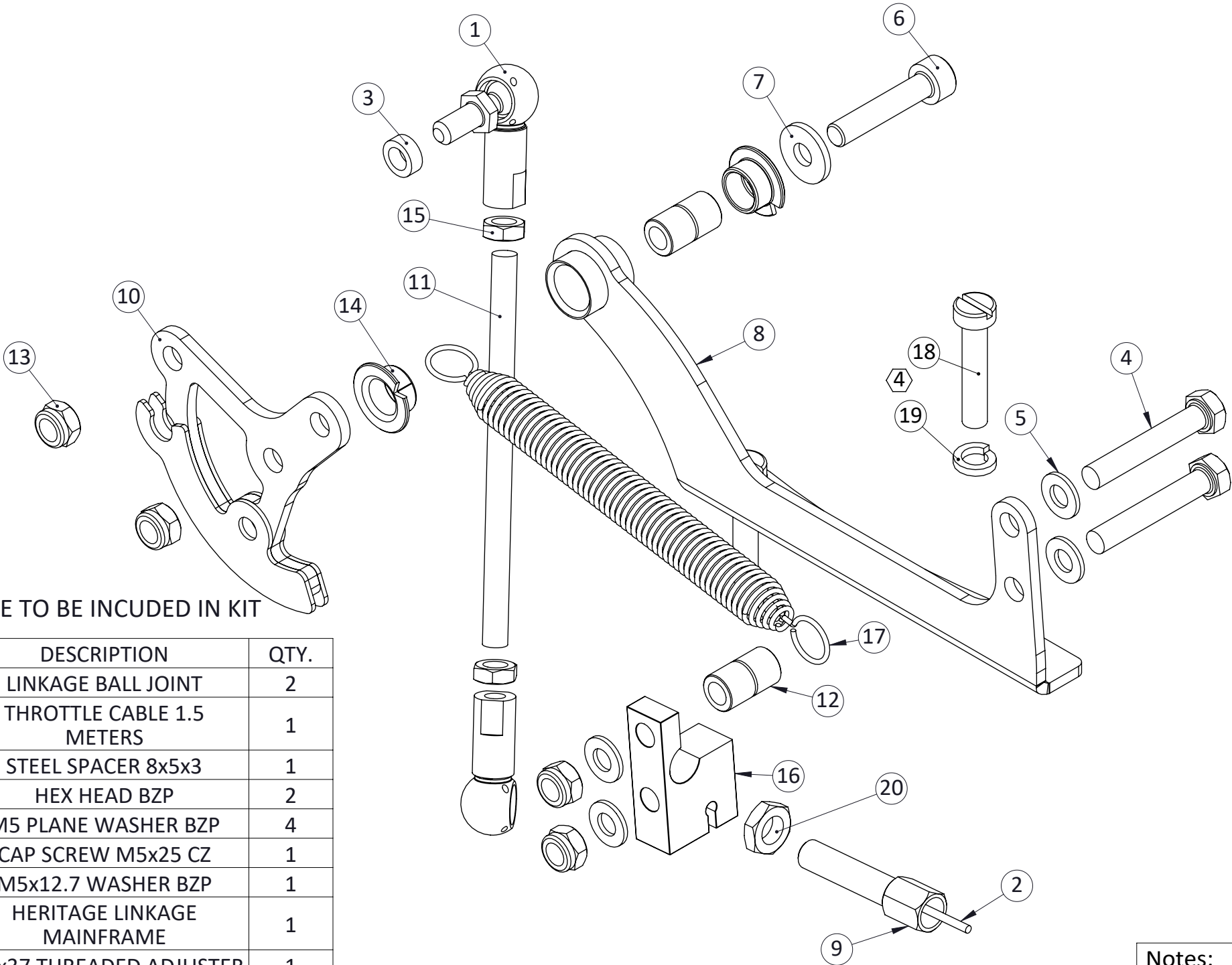
Material: N/A

Treatment: N/A

JENVEY

Tel 01746 768810

© JENVEY DYNAMICS LTD. 2015



DRAWING TO BE RETURNED TO THE DESIGN OFFICE AFTER USE

NOTE: C15 - 1.5M THROTTLE CABLE TO BE INCUDED IN KIT

ITEM NO.	PART NUMBER	DESCRIPTION	QTY.
1	LJ5B	LINKAGE BALL JOINT	2
2	C15	THROTTLE CABLE 1.5 METERS	1
3	BHS8X5X3	STEEL SPACER 8x5x3	1
4	M5X30HZ	HEX HEAD BZP	2
5	M5WPZ	M5 PLANE WASHER BZP	4
6	M5X25CZ	CAP SCREW M5x25 CZ	1
7	M5WDZX12.7	M5x12.7 WASHER BZP	1
8	LM02	HERITAGE LINKAGE MAINFRAME	1
9	M6X37-ADJ	M6x37 THREADED ADJUSTER	1
10	LF36	LINKAGE QUADRANT	1
11	M5X80AZ	M5x80 ALLTHREAD BZP	1
12	BHS8X5X14	TRANSFER LEAVER BUSHES/CLS1 LINKAGE KIT BUSH	2
13	M5NZ	M5 NYLOC NUT	4
14	BG0806FDU	Ø8xØ10x5.5 FLANGED BEARING	2
15	M5LZ	M5 LOCK NUT	2
16	M35-11MOD	M35-11 CUTDOWN	1
17	SG22	SPRING, LINKAGE KIT - LOOSE HOOK	1
18	M5X25SS	M5X25 STAINLESS STEEL SLOTTED SCREW	2
19	M5WSS	M5 STAINLESS STEEL SPLIT WASHER	2
20	M6LZ	M6 LOCKNUT	1