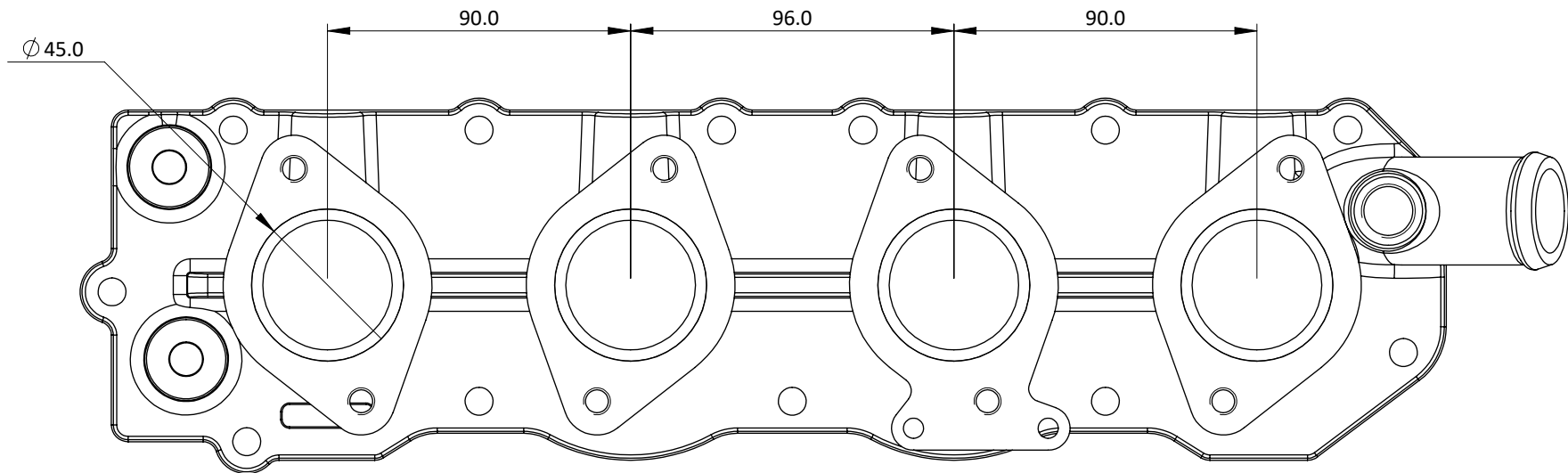
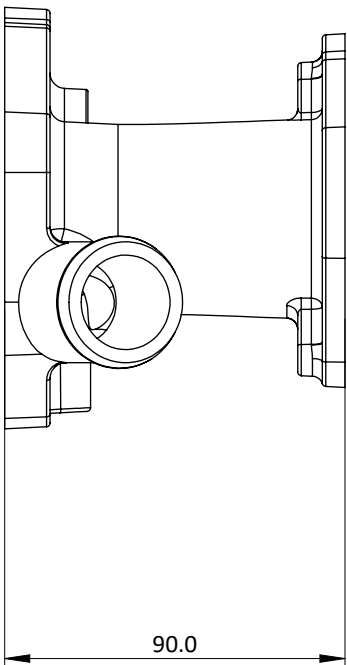
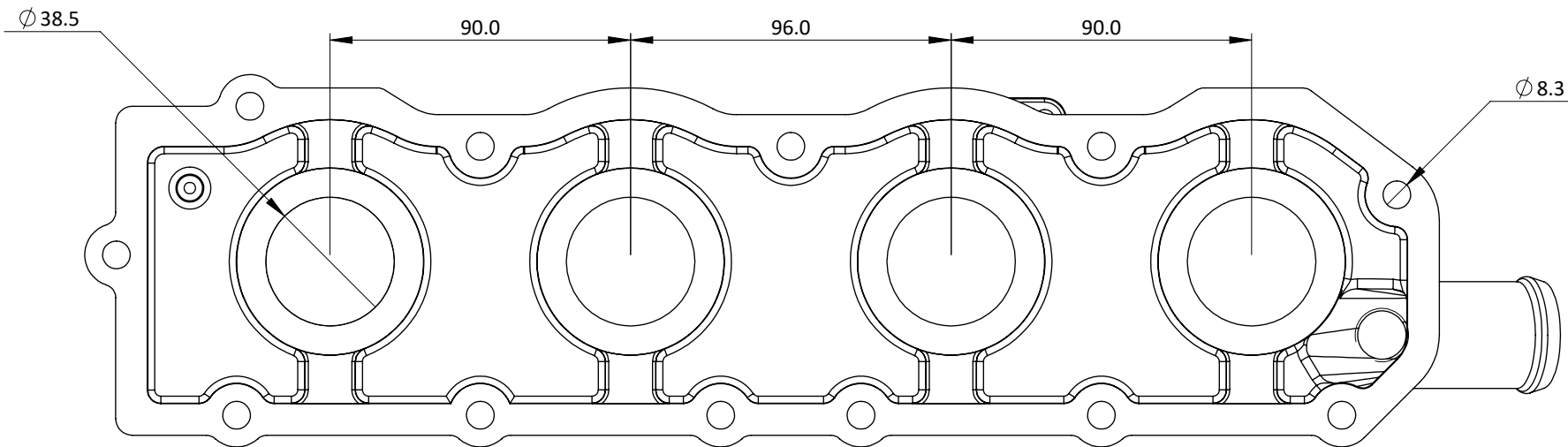


AFR04 - ALFA TWIN SPARK MANIFOLD



Engineered to win



MADE FOR 105 T/SPARK CONVERSIONS, MANIFOLD BOLTS STRAIGHT ON TO A STD 2.0 TWIN SPARK ALFA 75 ENGINE AND EARLY 164 ENGINES AND CAN ALSO BE FITTED INTO 105 SERIES CARS.

TEMP GAUGE HOLE THREADED FOR STD 105 SENDER UNIT AND BOSSES ARE AVAILABLE IF REQUIRED FOR HEATER AND BRAKE SERVO.

Frame: 1 of 1	
Version: 2	
Tel 01746 768810	© JENVEY DYNAMICS LTD. 2015
Web WWW.JENVEY.CO.UK	