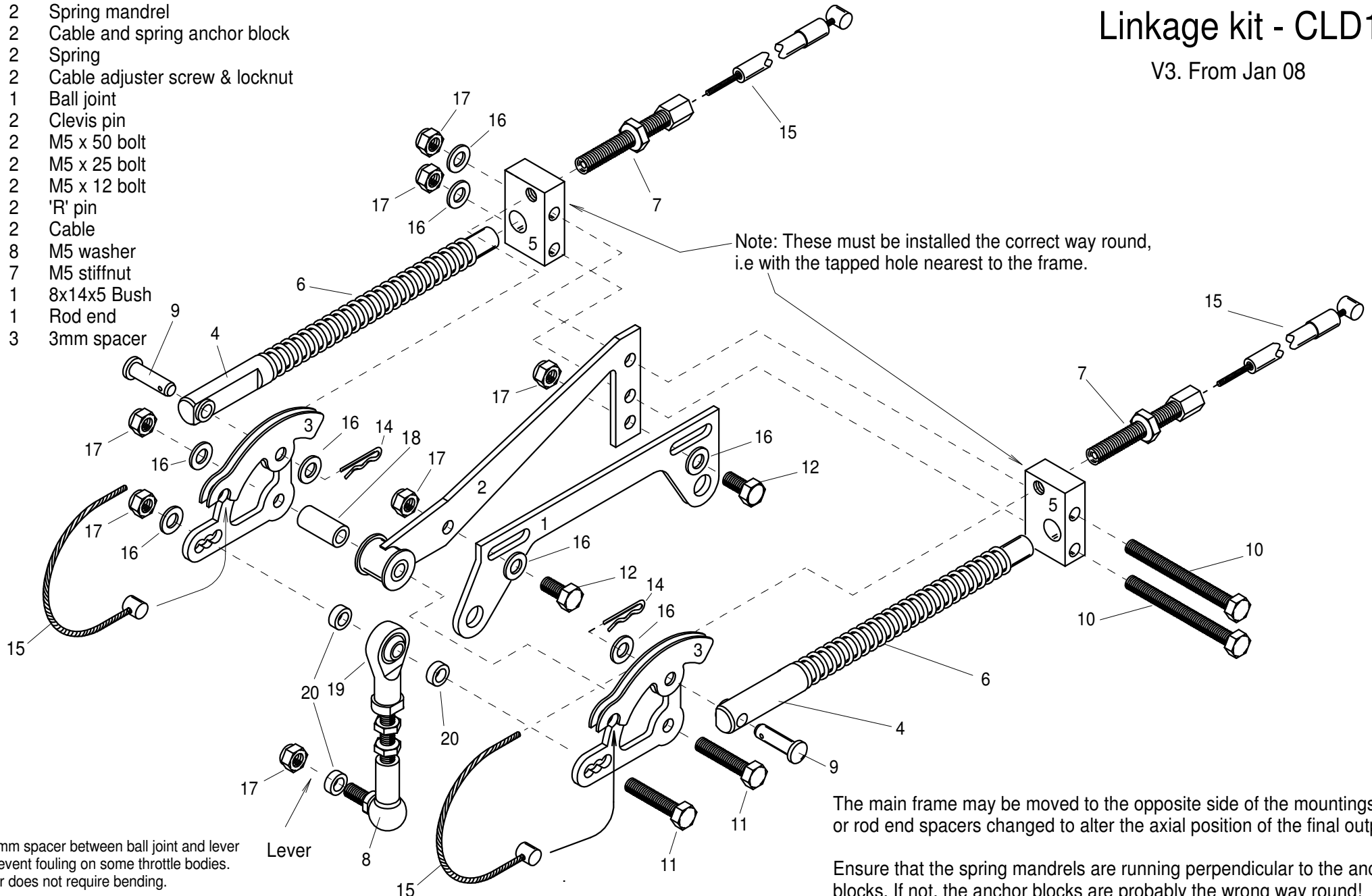


# Linkage kit - CLD1

V3. From Jan 08

Ref	Quant	Description
1	1	Mounting bracket (varies with type)
2	1	Main frame
3	2	Quadrant
4	2	Spring mandrel
5	2	Cable and spring anchor block
6	2	Spring
7	2	Cable adjuster screw & locknut
8	1	Ball joint
9	2	Clevis pin
10	2	M5 x 50 bolt
11	2	M5 x 25 bolt
12	2	M5 x 12 bolt
14	2	'R' pin
15	2	Cable
16	8	M5 washer
17	7	M5 stiffnut
18	1	8x14x5 Bush
19	1	Rod end
20	3	3mm spacer



Note: These must be installed the correct way round, i.e with the tapped hole nearest to the frame.

Fit 3mm spacer between ball joint and lever to prevent fouling on some throttle bodies. Lever does not require bending.

The main frame may be moved to the opposite side of the mountings or rod end spacers changed to alter the axial position of the final output.

Ensure that the spring mandrels are running perpendicular to the anchor blocks. If not, the anchor blocks are probably the wrong way round!