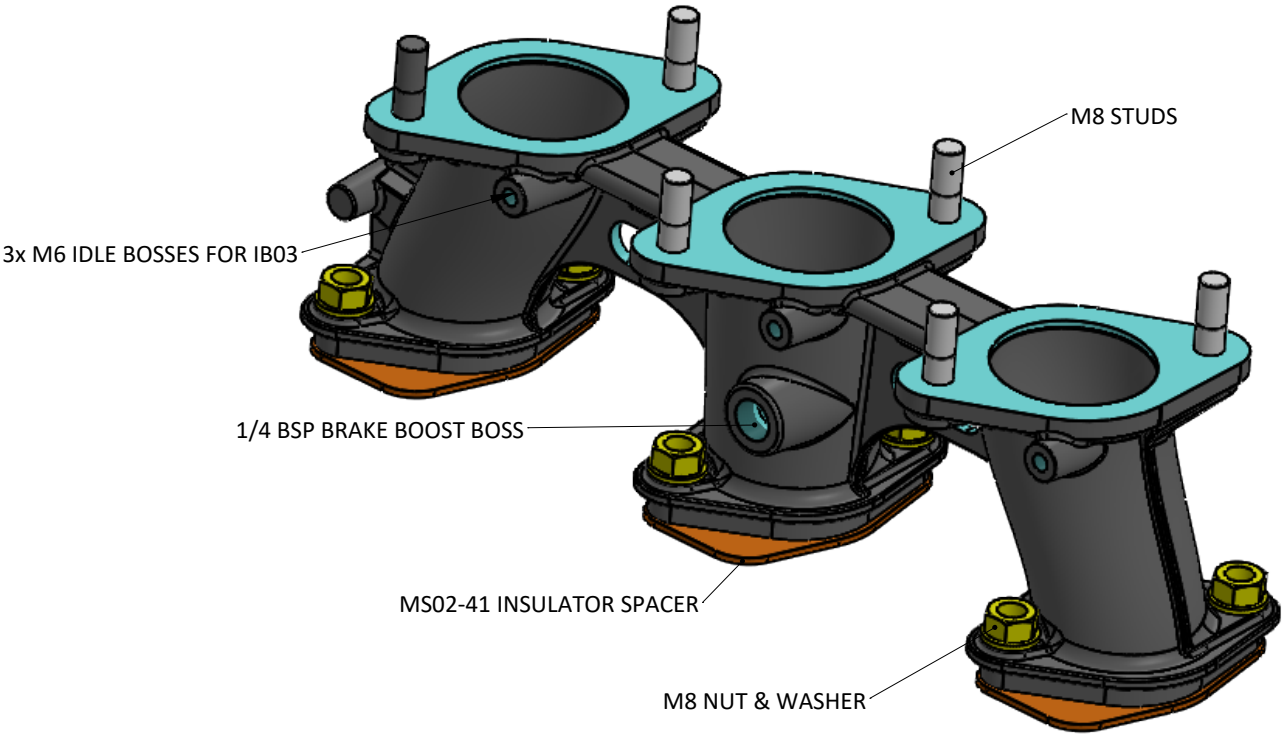
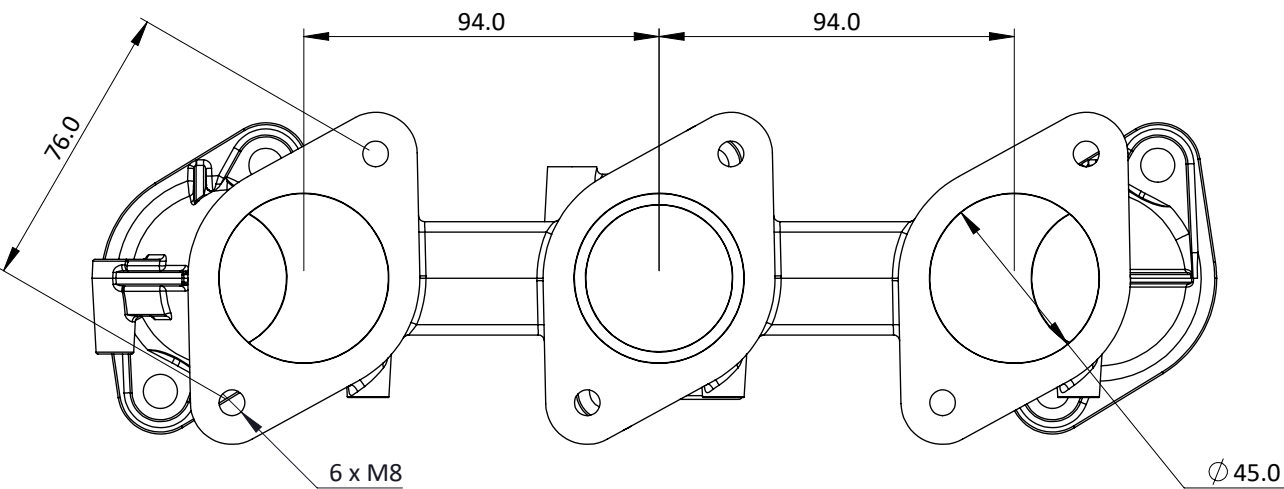
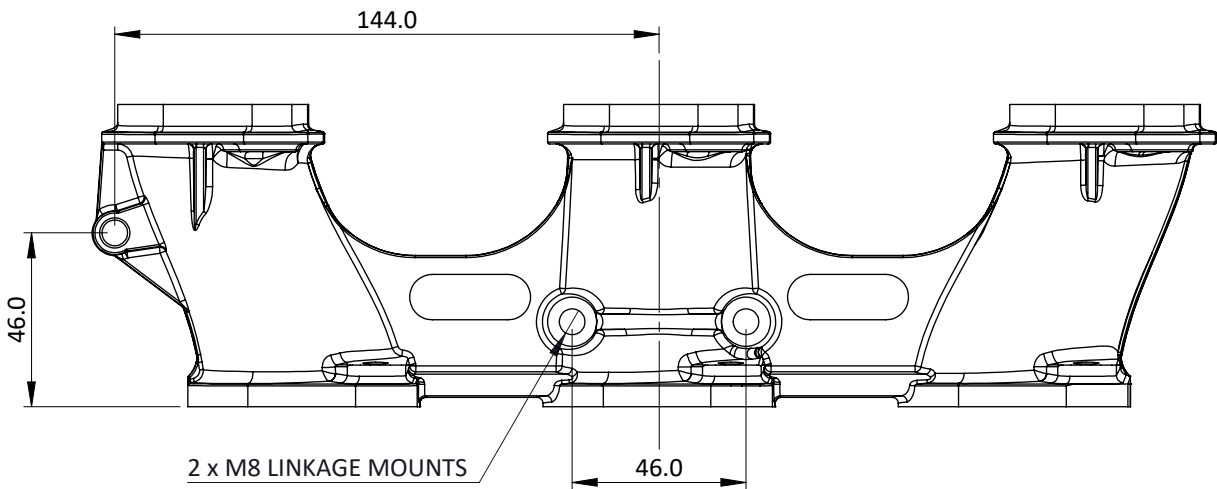
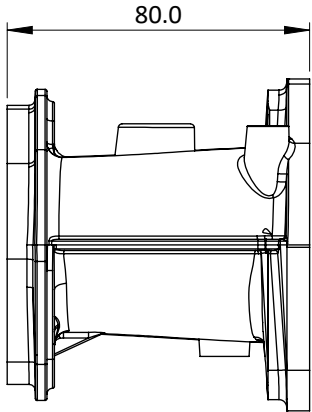
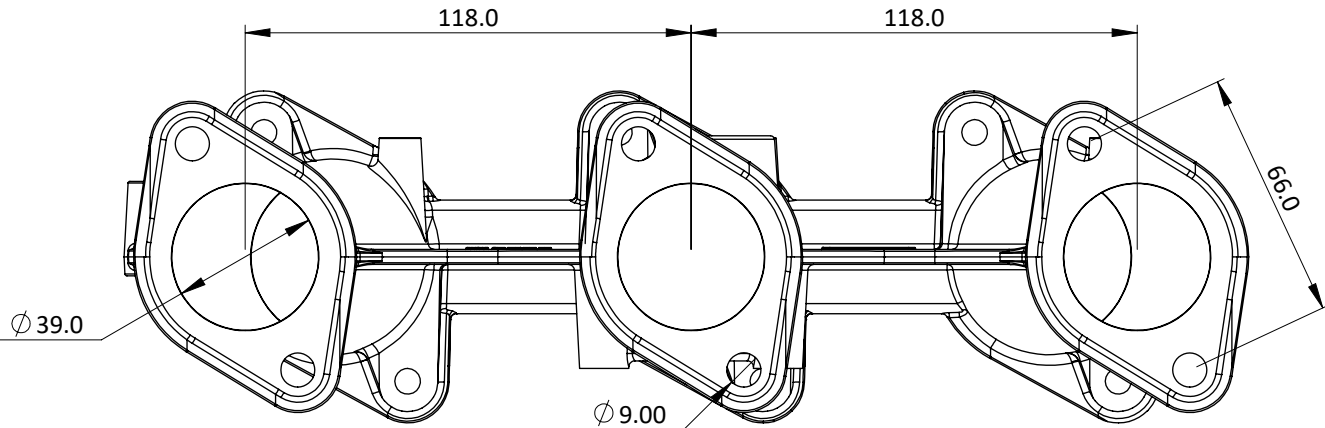


# MPC06-39 - PORSCHE TDA3 MANIFOLD PAIR - 45/39

FOR PORSCHE 2 STUD AIR COOLED EARLY 911 STYLE CARS 1963-1989  
USED ON THE 2.0L TO 3.0L AND 3.2 CARRERA ENGINE  
COMES WITH B30 PHENOLIC 2MM INSULATED SPACERS AND FIXING KIT  
MANIFOLD POWDER COATED CRACKLE BLACK



Engineered to win



Frame: 1 of 1

Version: 6

Tel 01746 768810

© JENVEY DYNAMICS LTD. 2015

Web WWW.JENVEY.CO.UK