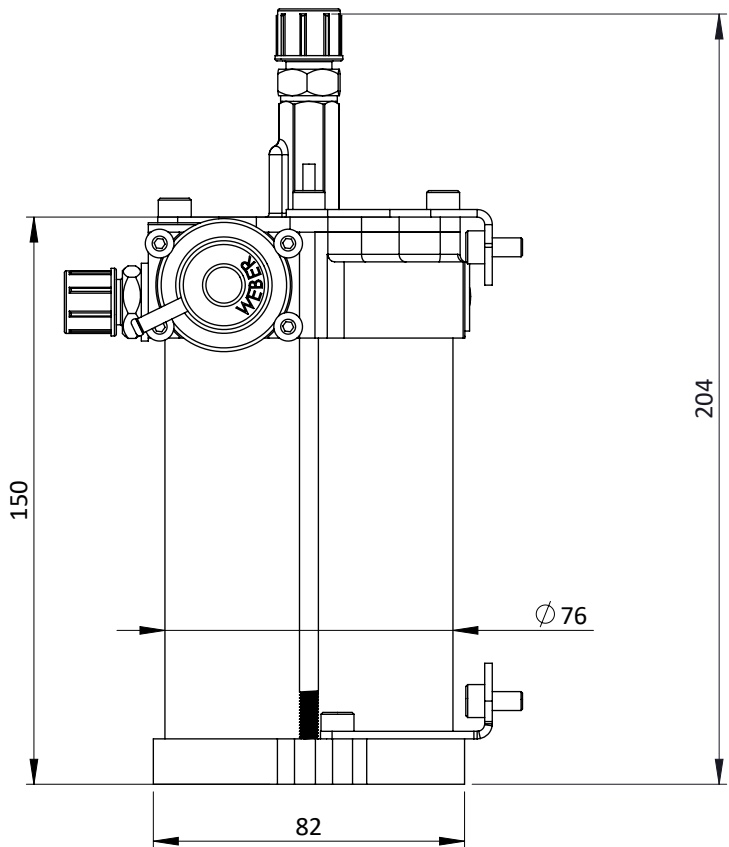
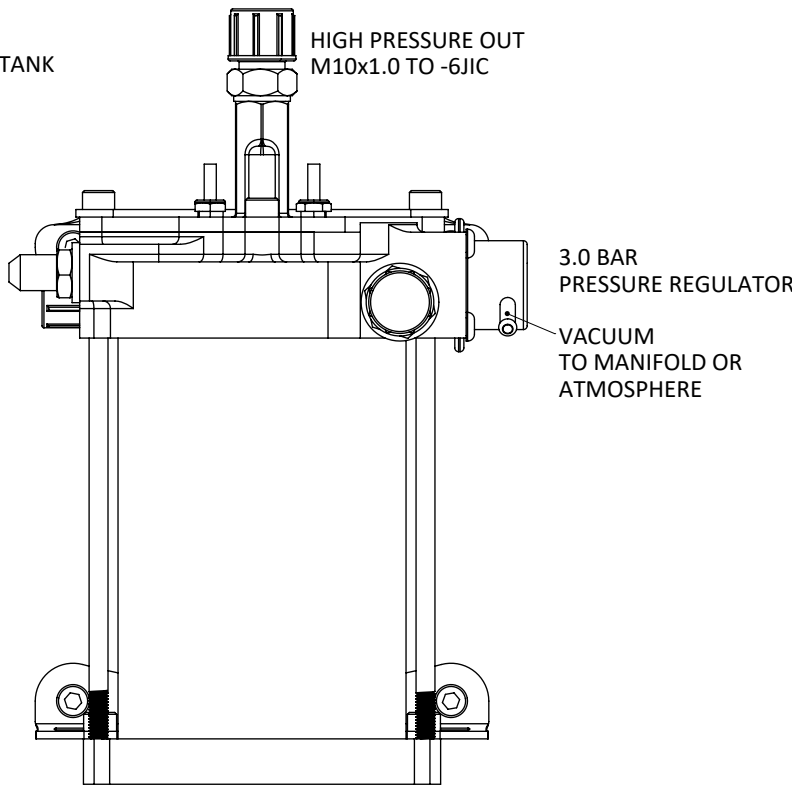
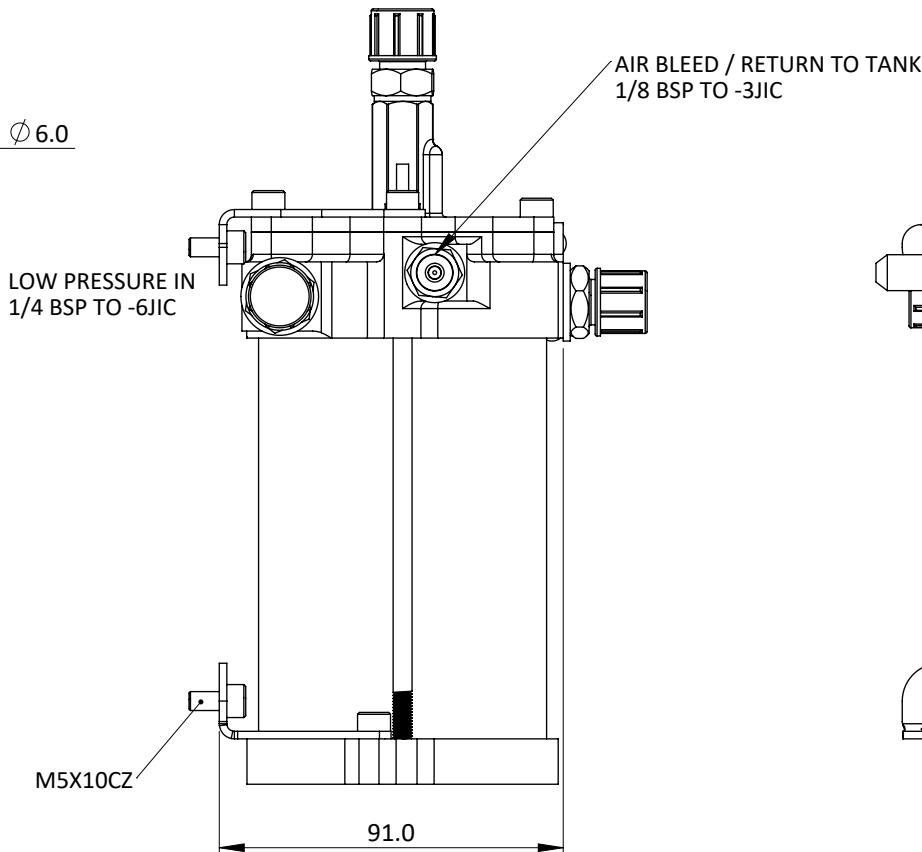
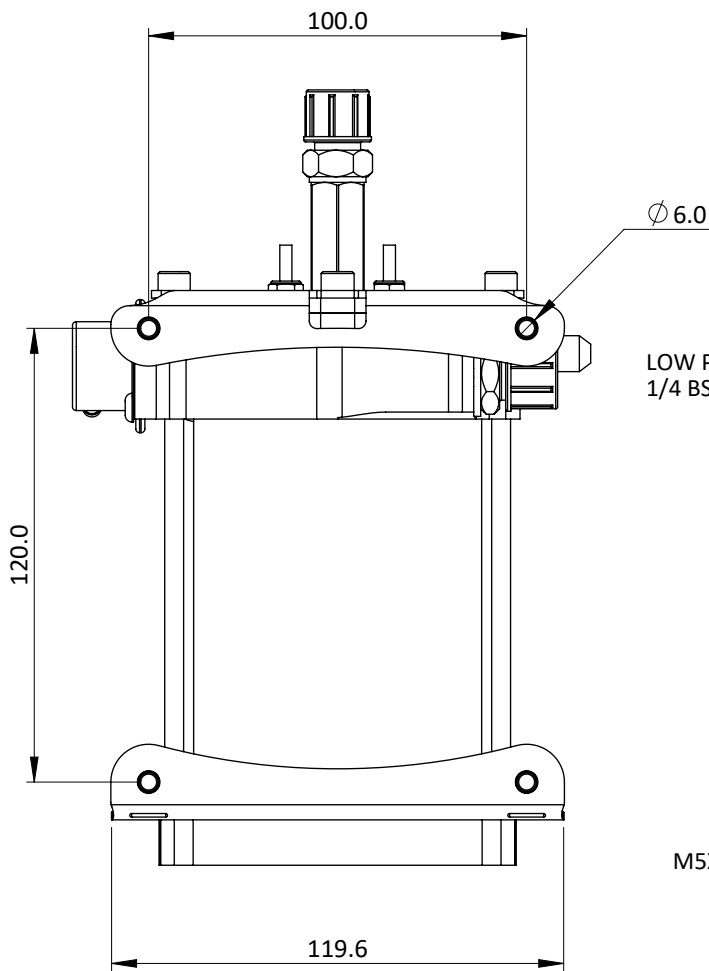
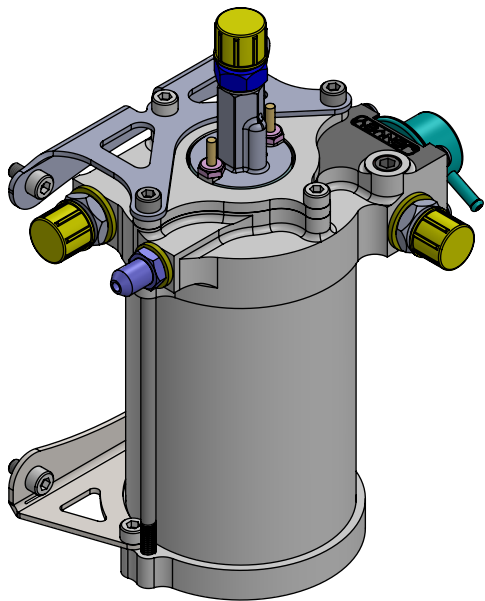
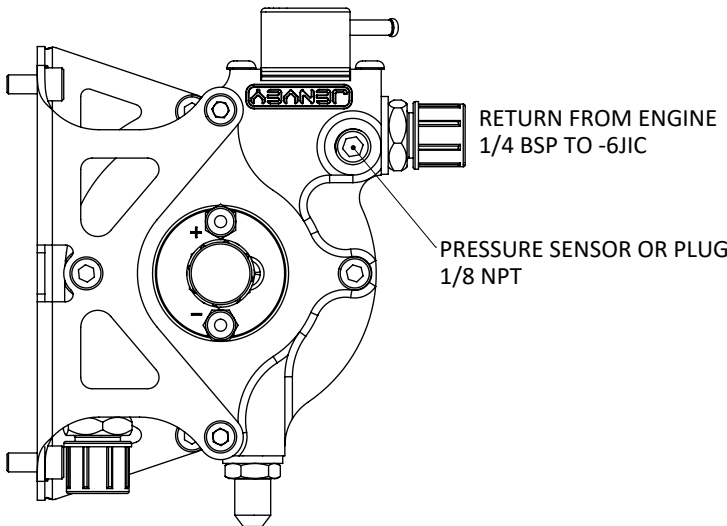


# FS2-FP20 - SWIRL POT SETUP FOR TI PUMP



Engineered to win



SWIRL POT INTERNAL VOLUME: 373 ML  
 -6 JIC FITTING TORQUE = 17NM  
 -3 JIC FITTING TORQUE = 8NM  
 60 MICRON PRE-FILTER  
 TI AUTOMOTIVE INLINE HIGH PRESSURE FUEL PUMP  
 222 L/HOUR AT 5 BAR  
 3.0 BAR WEBER FUEL PRESSURE REGULATOR INCLUDED  
 SWIRL POT MUST BE MOUNTED WITHIN 5° OF VERTICAL