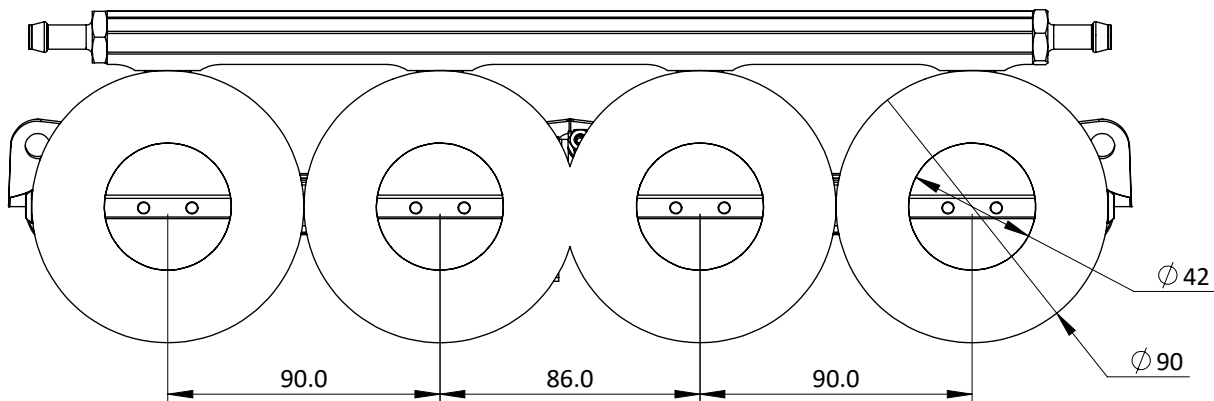
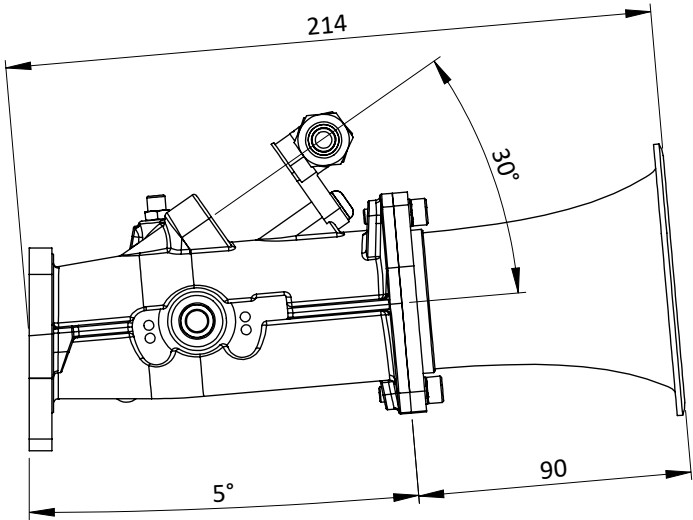
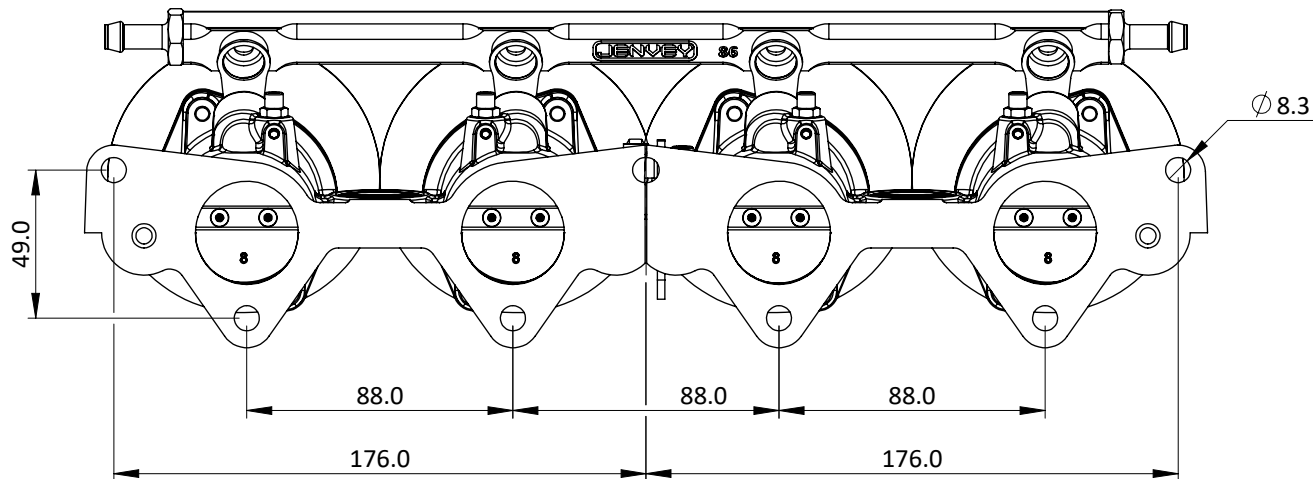
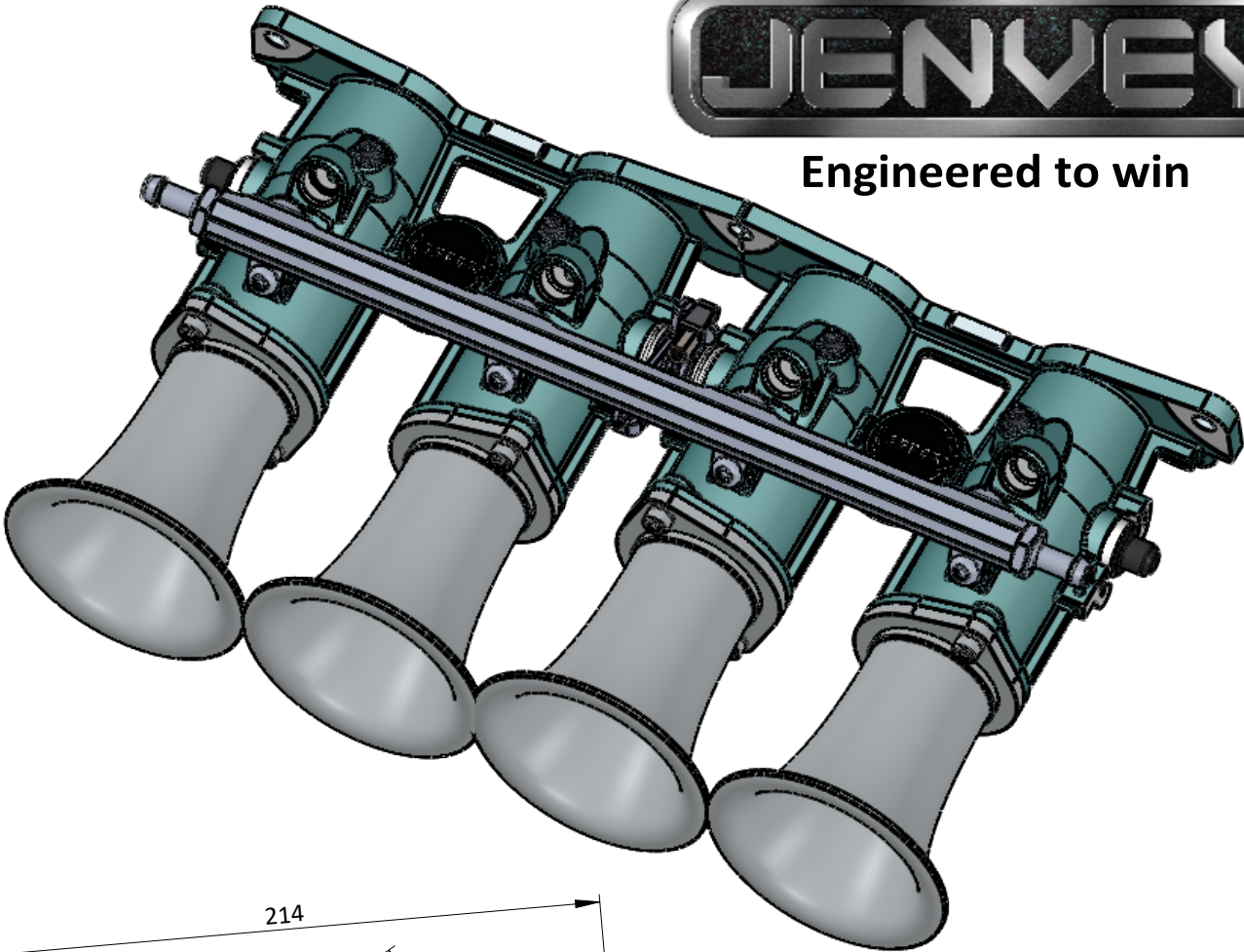
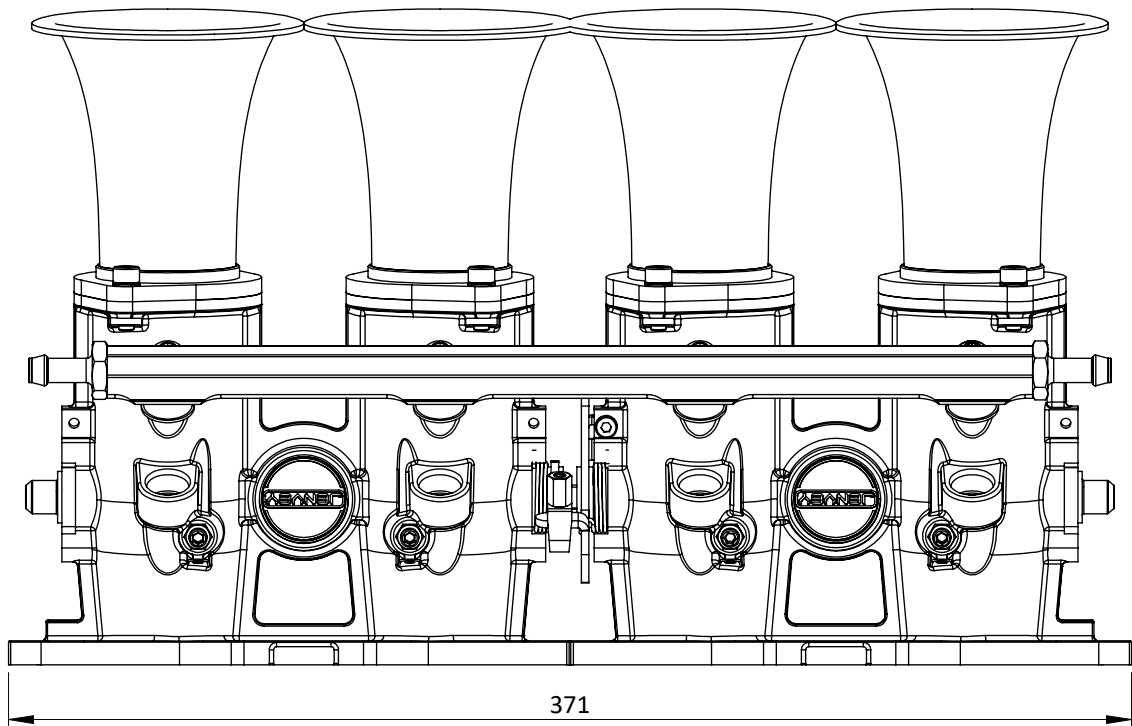


CKRV02 - ROVER K DIRECT TO HEAD Ø42mm



Engineered to win



Rover Individual Throttle Body (ITB) kit for fuel injecting your Rover K series engine which contains a linked pair of Ø42mm throttle bodies which attach directly to the cylinder head and four 90mm long air horns. This engine was used in Rover Metro, 200, MGF, Lotus Elise, Caterham and many kit cars. Made to order.